



- > Patient Safety
- > Geriatric Care
- > Home Care

Home Care
Products



Medikokim established 1988 in Istanbul and started production process concerning its first product in 1990. In this period developed its product range and specifications.

Today, with its modern technology and experienced staff Medikokim is manufacturing disposable products of its own according to the international standards, all of them are first manufactured in Turkey, becomes a contributor to the economy and the health sector of the country.

Products of the Medikokim are used with success in the region of Europe, Asia, Africa and Middle America in 28 countries, in addition to Turkey.



Index



Patient Safety Products

SAFEBELT Patient Belts	8
FESTERMED Hand & Foot Fixation Bands.....	22
MITTMED Finger Control Mitts.....	26
RESTMED Freedom Splint.....	28



Treatment and Daily Life Support Products

TRAPAD Tracheal Cannula Pads	32
TRAGERMED Tracheal Cannula Holders	33
CLAMPMED Urine Control Clamp	35
CONDOFIX Condom Fixer.....	37
FIXELMED Urine Bag Holder	38
FIXERMED Male Urine Catheter Holder	39
SCHÜTZERMED Eye Protective Band.....	40



Wound Care Support Products

FERSEMED Heel Protector	48
FERSEMED RG Food Elevator	49



Fall Risk Prevention Products

Fall Management Socks	52
Fall Precaution Bracelets	53
Essential Fall Management Kit.....	53



- > Patient Safety
- > Geriatric Care
- > Home Care

Home Care Products

Patient Safety Products



SAFEBELT Patient Belts

Patient Safety Belts

Bed & Stretchers Safety Belts

Waist Roll Belt	10
Shoulder Restraints	10
Wrist Restraints	11
Ankle Restraints	11
Full Body Crisis Set	11

Wheelchair Safety Belts

Waist Belts	12
Shoulder Restraints	12
Support Belts.....	13

Patient Transfer Safety Belts

Wrist Movement Restriction Belt	14
Ankle Restriction Belts	14
Binding Band for Wristbands and Ankle Bands	14

Accessories

Steel Lock	16
Magnetic Key	16
Bag	16

Patient Fixation Belts

Bed Safety Belts Group

Wrist Safety Belt.....	18
Ankle Safety Belt.....	18

Wheelchair Safety Belts..... 19 |

Patient Support Belts

Walking Belts	20
Lift Assist Belt.....	21

FESTERMED Hand & Foot Fixation Bands

FESTERMED Metal	22
FESTERMED QRB	22
FESTERMED Deluxe	23
FESTERMED Classic	24

MITTMED Finger Control Mitts

MITTMED MITTFC 101 Fishnet.....	26
MITTMED MITTOTW Open	26
MITTMED MITTCTW Closed	27
MITTMED MITTSRVTW Therapy	27

RESTMED Freedom Splint

RESTMED Standart Series	28
RESTMED Soft Series	29



SAFEBELT

Patient Belts

SAFEBELT Patient Belts

	Patient Safety Belts Bed & Stretchers Safety Belts Waist Roll Belt Shoulder Restraints Wrist Restraints Ankle Restraints Full Body Crisis Set Wheelchair Safety Belts Waist Belts Shoulder Restraints Support Belts Patient Transfer Safety Belts Wrist Movement Restriction Belt Ankle Restriction Belts Binding Band for Wristbands and Ankle Bands
	Patient Fixation Belts Bed Safety Belts Group Wrist Safety Belt Ankle Safety Belt Wheelchair Safety Belts
	Patient Support Belts Walking Belts Lift Assist Belt
	Accessories Steel Lock Magnetic Key Bag

SAFEBELT

Patient Safety Belts

Steel Lock Series



Safebelt patient safety belts used to control the movements of the patients with high safety risk (mental patients, alcohol addicts and patients at risk for escape) that might harm to their environments.

It has a wide product range to prevent and limited all undesired movements to respond all cases.

General Specifications

- By providing a secure fixation offers a maximum safety both for patients and around.
- Provides maximum freedom sensation to the patients where the patient movement is restricted as much as necessary.
- Application is easy and practical through effective magnetic switches.
- They are quite reliable with special steel pin locks.
- According to their usage areas, are divided into 3 main groups;
 - Used bad and stretcher
 - Used in chair
 - Used in patient transfer
- Products are made of %100 terylene and polyester material.
- 2 years warranty.
- Washable at 95 °C.

SAFEBELT

Bed & Stretchers Safety Belts



Waist Roll Belt

- Provides secure bedding for the patients.
- Provides freedom to turn to sides besides lying back and sitting positions.
- Meanwhile since patients are free to use their hands and legs, they can move comfortably for their social or personal needs (reading, eating etc.).



Shoulder Restraints

- Prevents shoulder and body movement and fixes the patients laid back. Used together with Waist Roll Belt or Multi - Function Extension Belt.

This group belts are used in order to fix patients securely to the bed and stretcher.



Wrist Restraints

- Securely fixes the wrist of the patient to the bed frame and restricts the movement certainly.
- Provides comfort for the patients due to its aesthetic and safe design.



Ankle Restraints

- Securely fixes the ankle of the patient to the bed frame and restricts the movement certainly.
- By using together with the extension, provides limited restriction for the patient's leg movement.
- Provides comfort for the patients due to its aesthetic and safe design.



Full Body Crisis Set

- Used to provide movement restriction for the patients during crisis.
- Consist of the items below;
2 pcs. wrist restraints, 2 pcs. ankle restraints.
Waist roll belt
Shoulder restrains
Multifunctional extension belts

SAFEBELT

Wheelchair Safety Belts

This group belts are used in order to fix patients securely on the wheelchair.



Waist Belts

- Secures the patient sitting on the wheelchair from slipping.
- If necessary can be used together with Pelvic Belt.



Shoulder Restraints

- Secures the patient sitting on the wheelchair from bending forward or backward also slipping.

SAFEBELT

Optional Support Belts

Supporting belts provides extra safety and comfort and used together with main safety belts.



Multi - Function Belt

Used together with wrist and ankle restraints to provide limited movement restriction.



Waist Extender

Provides extension for the waist belts for XXL size patients.



Standard Extender

Used together with other main belts where longer ends needed.



Pelvic Extender

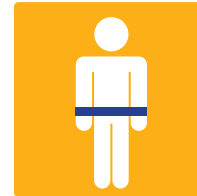
Provides extra safety to the patients, used together with the waist roll belt and provides additional support in sitting position as well.

SAFEBELT

Patient Transfer Safety Belts

Belt is used to restrict the patient's arm and leg movements while being taken from one place to another place.

Belt is composed of three parts; including hand, foot and link belts.



Wrist Movement Restriction Belt

It is formed from two wrist belts and a belt wrapped around the waist and sewn onto the belt conveyor.

Wrist belts wrap securely and will not harm the skin, conveyor belt ensure the hands at waist height by fixing the patient and prevents damage to itself and environment.

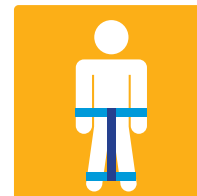


Ankle Restriction Belts

It is formed from conveyor belt and two wrist belts sewn onto the belt.

Wrist belts wrap the ankle comfortably without any pressure and in confidence that will not harm the skin.

The conveyor belt controls the patient's walking speed and stride length and prevents damage to the environment by restricting leg movement.



Binding Band for Wristbands and Ankle Bands

Binding band is used to join wristband set with ankle band set.



Safebelt Patient Safety Belts Ordering Information



Model	Size	Order Code
Waist Roll Belt	S-M (60-110 cm)	SBB101
Waist Roll Belt	L (85-135 cm)	SBB102
Wrist Restraints	Standart (14-26 cm)	SBB201
Wrist Restraints Set	Standart (14-26 cm)	SBB202
Ankle Restraints	Standart (16-32 cm)	SBB301
Ankle Restraints Set	Standart (16-32 cm)	SBB302
Ankle & Waist Restraints Set	Standart (14/16-24/32 cm)	SBB605
Shoulder Restraints	Standart (216 cm)	SBB401
Shoulder & Waist Restraints Set	Standart (216 cm)	SBC 102
Multi Function Belt	Standart (180 cm)	SBS501
Standard Extender	Standart (60 cm)	SBS502
Waist Extender	Standart (25 cm)	SBS503
Pelvic Belt	Standart (95 cm)	SBS504
Standart Crisis Set	S-M	SBB603
Standart Crisis Set	L	SBB604
Full Body Crisis Set	S-M	SBB601
Full Body Crisis Set	L	SBB602
Wheelchair Waist Belt	Standart (150 cm)	SBC101
Wrist Movement Restriction Belts	Standart	SBT101
Ankle Restriction Belts	Standart (140 cm)	SBT201
Binding Band for Wrist Bands and Ankle Bands		SBT301

SAFEBELT

Accessories



Steel Lock

- Lock with magnetic control, special design, made of steel, can be unlocked by a special key.

Magnetic Key

- Easy to use, magnetically controlled key.



Bag

- Designed in 2 sizes can be able to carry complete set of crisis or small enough to carry single sets as separated.
- Existing of special cases which the locks and keys easily controlled.

Safebelt Accessories Ordering Information

Model	Size	Order Code
Steel Lock	Standart	SBA701
Magnetic Key	Standart	SBA702
Bag	Standart	SBA703

SAFEBELT

Patient Fixation Belts

Buckled Soft Series



Safebelt patient fixation belts used to control the movements in sensitive and precisely of the patients with secondary safety risk that might harm themselves. It has a wide product range to prevent and limited all undesired movements to respond all cases.

General Specifications

- They provide maximum patient safety to itself and the environment by fixing in safe.
- They provide comfort and sense of freedom to the user even is restricted or controlled at the time of movement.
- They are applied easily and practical because of their front fastening straps made of Velcro and shatter - resistant material made of POM buckled locks.
- According to their usage areas, are divided into 2 groups used in the chair and used in the bed.
- Products are made of %100 terylene and polyester material.
- Can be washed at 95 °C.
- 2 years warranty.

SAFEBELT

Bed Safety Belts Group

This group belts are used in order to fix elderly patients in a safe and comfortably way to the bed.



Wrist Safety Belt

- Constants patient's wrist to the bed frame and restrict movement completely or partially.
- Provide comfort to the patients through its convenient model and aesthetic.
- Doesn't harm the skin cause to be made of soft material and provides comfort to the patient.



Ankle Safety Belt

- Constants patient's ankle to the bed frame and restrict movement completely or partially.
- Provide comfort to the patients through its convenient model and aesthetic.
- Doesn't harm the skin cause to be made of soft material and provides comfort to the patient.

SAFEBELT

Wheelchair Safety Belts

This group belts are used in order to fix elderly patients securely and comfortably to the wheelchair.



Wheelchair Safety Belt

- Prevents sliding and enables leaning forward for the patient sitting in the wheelchair.
- Provides support between a patient's leg with soft filled portion in the front.

Safebelt Wheelchair Safety Belts Information

Model	Size	Order Code
Wrist Fixation Belt	Buckled (45 cm)	YBM201
Ankle Fixation Belt	Buckled (65 cm)	YBM301
Wheelchair Fixation Belt	Buckled (164 -146 cm)	YBS102



SAFEBELT

Patient Support Belts

Safebelt Patient Support Belts are designed for patients who need support and at risk of falling.



Walking Belts

- Walking belt helps to support the patients who have difficulty to walk alone.
- Soft and durable belt has got six handles as being sewn on the vertical and horizontal ergonomic grip straps are available.
- By assistance of those handles on the belt wrapped above the waist helps prevent caregiver back injuries and assists in the safe

transfer, stumble and fall risk is avoided.

- The belt is easily to grasp the patient's waist by its enough width.
- By courtesy of plastic buckle can be adjustable according to each body, opening and closing is simple, fast and secure.
- It can be cleaned by hand or machine washed at 95 °C.



Lift Assist Belt

- The belt used to lift up the patient from bed or wheelchair.
- Ergonomic hand grips are mounted at both ends of the belt.
- The belt is wrapped around the patient's waist and given support to try to pull up, go back (fall risk) is blocked.
- It was made of durable soft, special flexible neoprene material.
- It can be easily carried by each officer because of lightness and takes up little space.
- If necessary, hand or machine washable at 30 °C.

Safebelt Patient Support Belts Ordering Information

Model	Size	Order Code
Walking Support Belt	Standart (140 cm)	SBS 101
Patient Lift Assist Belt	Standart (46 cm)	SBL 201



FESTERMED

Hand & Foot Fixation Bands



FESTERMED Metal

- For use of patients in bed or litter.
- With its perdurable connection ribbon through the metal hoop can be fixed to the needed place.
- Supported with its all round overlog seam extremely durable.
- Skin touch cotton surface absorbs the sweat.
- In case of long term use does not cause allergy and irritation.
- Can be used after washed 30 °C and making sterilization at autoclave.



FESTERMED QRB

- Patients assessed to be at risk of disrupting life-saving treatment or whose picking, pulling, scratching or peeling exacerbates a skin condition, causes self-injury, or compromises wound site integrity.
- Soft, and supported material.
- Initial hook and loop closure for additional security.
- Secures to the bed with quick-release buckles or ties.
- Adjustable size fits pediatric or adult limb.
- Wrist circumference 27 cm.



Bands to fix the wrists of the patient in order to prevent the movement
5 different models for various purposes.



FSTERMED Deluxe

- Especially for the patient who applies high strength.
- Skin touch cotton surface absorbs sweat.
- In case of long term use does not cause allergy and irritation.





FESTERMED Classic

- For the use of inpatient both bed or litter.
- Skin touch cotton surface absorbs the sweat.

- In case of long term use does not cause allergy and irritation.
- Gamma sterilized.

CE 0476



Festermed Ordering Information

Model	Size	Piece Pouch	Pouch/ Box	Box Size	Box Weight	Order Code
Deluxe	34 cm.	1	25	20 x 30 x 20 cm.	1215 gr.	ALH 2006
Deluxe / Double	34 cm.	2	12	20 x 30 x 20 cm.	1175 gr.	ALH 2007
Twain	32 cm.	1	25	20 x 30 x 20 cm.	1275 gr.	TC 2009
QRB	27 cm.	1	25	20 x 30 x 20 cm.	1790 gr.	QRB 2013
QRB / Double	27 cm.	2	12	20 x 30 x 20 cm.	1726 gr.	QRB 2014
Classic Hand	25 cm.	1	25	20 x 30 x 20 cm.	850 gr.	ALH 2001
Classic Hand / Double	25 cm.	2	12	20 x 30 x 20 cm.	815 gr.	ALH 2008
Classic Foot	40 cm.	1	25	20 x 30 x 20 cm.	910 gr.	ALH 2002
Classic Foot / Double	40 cm.	2	12	20 x 30 x 20 cm.	885 gr.	ALH 2010
Classic Leg	65 cm.	1	25	20 x 30 x 20 cm.	1100 gr.	ALH 2003
Metal Hand	25 cm.	1	25	20 x 30 x 20 cm.	1215 gr.	ALH 2011
Metal Hand / Double	25 cm.	2	12	20 x 30 x 20 cm.	1130 gr.	ALH 2012

MITTMED

Finger Control Mitts



MITTMED MTTFC 101 Fishnet

- It avoids the trauma with well rounded and soft wad part that placed hand palm.
- The upper part that consisting complete synthetic mesh restrict the movement of the fingers.
- It allows inserted use of IV cannula when get attached on the hand because of its netting tissue.
- Easy and safe with its velcro bands.
- In case of long term using does not cause allergy and irritation.
- One model for both right and left arms.
- Washable at 30 °C.



MITTMED MITTOTW Open

- It avoids the trauma with well rounded and soft wad part that placed hand palm.
- If necessary , can be interfered to the hand and fingers by opening the upper portion.
- Easy and safe with its velcro bands.
- In case of long term using does not cause allergy and irritation.
- One model for both right and left arms.
- Washable at 30 °C.

It is specifically designed for patients who try to remove catheters, attached cannulas or tend to hurt themselves.



MITTMED MITTCTW Closed

- It avoids the trauma with well rounded and soft wad part that placed hand palm.
- Easy and safe with its velcro bands.
- In case of long term using does not cause allergy and irritation.
- One model for both right and left arms.
- Washable at 30 °C.



MITTMED MITTSRVTW Therapy

- It helps to decrease patient stress as grabbing balls in the closed part of the mitt.
- Easy and safe with its velcro bands.
- In case of long term using does not cause allergy and irritation.
- One model for both right and left arms.
- Washable at 30 °C.

Mittmed Ordering Information

Model	Size	Piece Pouch	Pouch/ Box	Box Size	Box Weight	Order Code
Fishnet	26 x 18 cm.	1	12	42 x 30 x 30 cm.	1100 gr.	MITTFC101
Open	28 x 21 cm.	1	12	42 x 30 x 30 cm.	1600 gr.	MITTOTW
Closed	29 x 21 cm.	1	12	42 x 30 x 30 cm.	1950 gr.	MITTCTW
Therapy	29 x 23 cm.	1	15	42 x 30 x 30 cm.	850 gr.	MITTSRVTW



RESTMED

Freedom Splint



STANDART SERIES

- 100 % cotton lining; waterproof outer covering.
- In case of long term using does not cause allergy and irritation.
- It allows to using in place during X - Rays.
- Easy and safe with its velcro bands and plastic clips.
- Clipped to the patient's sleeve to help prevent sliding.
- One model for both right and left arms.
- Washable at 30 °C.

Restmed Standart Series Ordering Information

Model	Size	Piece Pouch	Pouch/ Box	Box Size	Box Weight	Order Code
Standart XS	23 x 34 cm.	1	10	25 x 50 x 35 cm.	1000 gr.	RSFRSW01
Standart S	28 x 37 cm.	1	10	25 x 50 x 35 cm.	1500 gr.	RSFRSW02
Standart M	30 x 47 cm.	1	10	25 x 50 x 35 cm.	2250 gr.	RSFRSW03
Standart L	36 x 64 cm.	1	10	25 x 50 x 35 cm.	4000 gr.	RSFRSW04
Standart XL	49 x 69 cm.	1	10	25 x 50 x 35 cm.	5000 gr.	RSFRSW05

It is specifically designed for patients who try to remove catheters, attached cannulas or tend to hurt themselves. By preventing of the patient's elbow movement prevents hands touching through the head and body.



SOFT SERIES

- 100 % cotton lining and soft, permeable to air, vinyl mesh outer covering.
- In case of long term using does not cause allergy and irritation.
- It allows to using in place during X - Rays.
- Easy and safe with its velcro bands and plastic clips.
- Clipped to the patient's sleeve to help prevent sliding.
- One model for both right and left arms.
- Washable at 30 °C.

Restmed Soft Series Ordering Information

Model	Size	Piece Pouch	Pouch/ Box	Box Size	Box Weight	Order Code
Soft XS	23 x 34 cm.	1	10	25 x 50 x 35 cm.	1000 gr.	RSFSSW01
Soft S	28 x 37 cm.	1	10	25 x 50 x 35 cm.	1500 gr.	RSFSSW02
Soft M	30 x 47 cm.	1	10	25 x 50 x 35 cm.	2250 gr.	RSFSSW03
Soft L	36 x 64 cm.	1	10	25 x 50 x 35 cm.	4000 gr.	RSFSSW04
Soft XL	49 x 69 cm.	1	10	25 x 50 x 35 cm.	5000 gr.	RSFSSW05



Daily Life Support





Products

TRAPAD Tracheal Cannula Pads	32
TRAGERMED Tracheal Cannula Holders	
Sponge Supported Fixation Bands.....	33
Velor Supported Rigit Fixation Bands	34
CLAMPMED Urine Control Clamp	35
CONDOFIX Condom Fixer.....	37
FIXELMED Urine Bag Holder	38
FIXERMED Male Urine Catheter Holder.....	39
SCHÜTZERMED Eye Protective Band	40

TRAPAD

Tracheal Cannula Pads

Designed to use together with the Tracheal Cannula.

Practical

By its elastic cannula holes can be used with every type and model of cannula.

Atraumatic

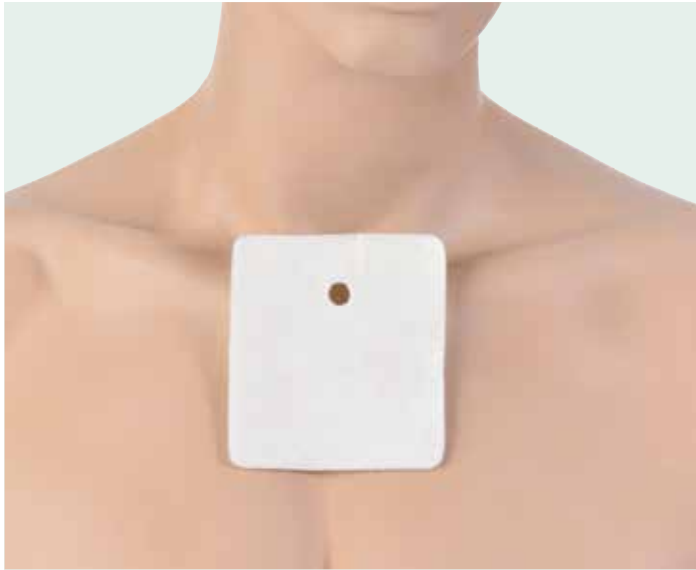
Produced from smooth, hydrofiber structured of nonwoven or hydrophil foam material.

Offers alternative options

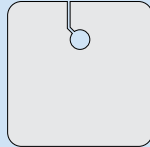
4 different models, each of them produced from various structured raw material. Each model has various dimensions for adult and children.

Sterile

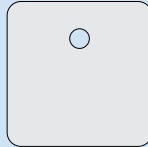
Gamma sterilized.



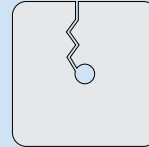
3 different raw materials,
4 models from each raw
material,
Different sizes for each model
for adults and children.



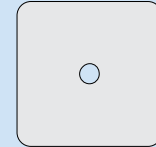
Straight slit Cannula
hole at the top.



Without slit Cannula
hole at the top.



Zigzag slit
Cannula centered.



Without slit
Cannula centered.



Trapad Standart

Both sides
absorbent.



Trapad Ultra

Double side pad,
absorbent on both
sides.



Trapad Blocker

One side absorbent
the other side
nonpermeable pad.

*Please contact with our sales department for order informations of Trapad.

CE 0476

TRAEGERMED

Tracheal Cannula Holders



Sponge Supported (Flexible) Fixation Holders

The sponge layer in the middle provides flexibility and softness to patient 2 different models.

Single piece model: Suitable for use in self.

Two pieces model: Better to use for the inpatient. Can be intervene to the cannula without moving.

Traegermed Velor Supported Bands Ordering Information

CE 0476

Model	Size	Piece Pouch	Pouch/ Box	Box Size	Box Weight	Order Code
Sponge Single Piece Baby	23 cm.	1	25	11 x 20 x 25 cm	200 gr.	TCHS 01
Sponge Single Piece Child	44 cm.	1	25	11 x 20 x 25 cm	230 gr.	TCHS 02
Sponge Single Piece Adult	56 cm.	1	25	11 x 20 x 25 cm	260 gr.	TCHS 03
Sponge Two Piece	36 + 6 cm.	1	25	11 x 20 x 25 cm	290 gr.	TCHS TP

Two different structure of holders: Sponge supported and rigid holders.

- Skin colour does not take attention.
- Skin touch cotton surface absorbs the sweat.
- In case of long term use does not cause allergy and irritation
- Gamma sterilized.



Velor Supported Rigit Fixation Holders

Non flexible and fixes canula in the first position thin structured fixation tapes
2 different models.

Single piece model: Proper for the use of the patients except inpatient.

Two pieces model: Better to use for the inpatient. Can be intervene to the cannula without moving.

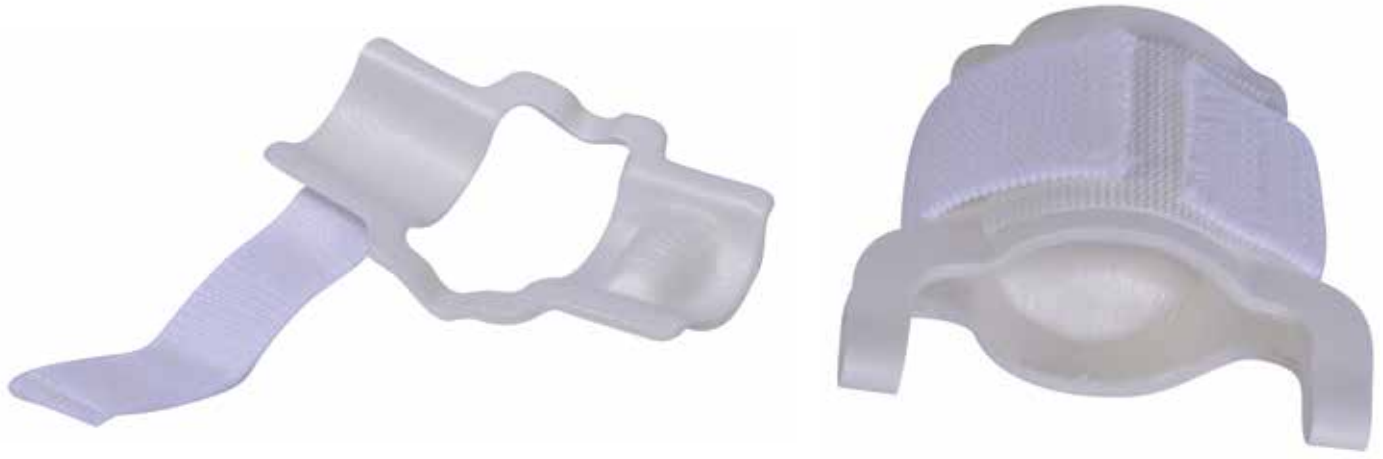
Traegermed Velor Supported Bands Ordering Information

CE 0476

Model	Size	Piece Pouch	Pouch/ Box	Box Size	Box Weight	Order Code
Sponge Single Piece Baby	23 cm.	1	25	11 x 20 x 25 cm	200 gr.	TCHR 01
Sponge Single Piece Child	44 cm.	1	25	11 x 20 x 25 cm	230 gr.	TCHR 02
Sponge Single Piece Adult	56 cm.	1	25	11 x 20 x 25 cm	260 gr.	TCHR 03
Sponge Two Piece	36 + 6 cm.	1	25	11 x 20 x 25 cm	290 gr.	TCHR TP

CLAMPMED

Urine Control Clamp



Comfort

Body structure of Clampmed consists of semi-hard polymer of soft foam provides easiness and comfort during use.

With the balanced elastic bandage spreads its radial strength to the cellwall equally and reduces the clamp pressure to minimum level.

Safe

When applied to the penis special designed cushion at the bottom part pressured to the urine system to reduce the incontinence and does not effects the blood circulation.

Practical to use

In case of need easy to open without support and fix again.

Healthy and Hygienic

Sterilized for use, produced from antiallergic special materials so no irritation will be caused to the skin.* Also antibacterial and antifungal featured no bacteria and fungus will be composed**.

The ideal solution is applied for 23 years in the incontinence problem!



Confidant

Not occupy to much place unforeseen easy to hide. Without thinking its presence very easy to use in daily life provides confidence to the patient.

Economic

Taking account of its using time, It is a more economical choice of product than absorbent ones.

*Antiallergic featured of Clamped is certified by the university report which is accredited by the Notify Body.

**Antibacterial and antifungus featured of Clamped is certified by the laboratuar report which is accredited by the Notify Body.

Clamped Ordering Information

Model	Size	Piece Pouch	Pouch/ Box	Box Size	Box Weight	Order Code
Clamped	Normal	1	1	4 x 10 x 16 cm	31 gr.	UCC 01
	Large	1	1	4 x 10 x 16 cm	32 gr.	UCC 02



CONDOFIX

Condom Fixer



Practical

- Fixes the male external urine catheter safely and securely in place.
- Single size for adult and children.
- Non sterile and single use.

CondoFix Ordering Information

Model	Size	Piece Pouch	Pouch/ Box	Box Size	Box Weight	Order Code
CondoFix	3 x 12 cm.	5	10	15 x 25 x 21 cm.	325 gr.	CF 8001



FIXELMED

Urine Bag Holder

Safely fix the urine bag holder to the leg and bears.



Practical

- A pair of fixation bands fits every size and model of leg urine bag.
- Safe and easy to use, can be washed at 30°C reusable.

Safe to use

- Elastic structure fits all leg size, covers the leg safely and keep stable.
- Wide part of the skin touch side which consists of silicone strap prevents the slide from the leg.

Comfort

- Special texture enables the skin breathe, reduces the sweat.
- Skin touch smooth feathery surface absorbs the sweat.
- Does not cause allergy and irritation.

Fixelmed Ordering Information

Model	Size	Piece Pouch	Pouch/ Box	Box Size	Box Weight	Order Code
Fixelmed	60 x 2 cm. / 60 x 4 cm.	1	10	11 x 20 x 25 cm.	320 gr.	UBH 1001

FIXERMED

Male Urine Catheter Holder

Stables the urine catheter and prevents traumatic effects



Practical

- Easy to use, pratique and safe.
- Fits all urine cannula types and models.
- Machine washable at 30 °C reusable.

Safe to use

- Latex free.
- Elastic structure fits all leg size, covers the leg safely and keep stable.

Comfort

- Special texture enables the skin breathe, reduces the sweat.
- Skin touch smooth feathery surface absorbs the sweat.
- Does not cause allergy and irritation.

Fixermed Ordering Information

Model	Size	Piece Pouch	Pouch/ Box	Box Size	Box Weight	Order Code
Fixermed	60 x 5 cm.	1	25	11 x 20 x 25 cm.	680 gr.	CH 4001



SCHÜTZERMED

Eye Protective Band



- Prevents from the UV rays up to 450 nanometer.
- Easy to use and practical, can be adjust to every head size.

- Fits the face perfectly and covers softly.
- Maximum safe with its connection elements.
- Gamma sterilized.

Schützermed Ordering Information

Model	Size	Piece Pouch	Pouch/ Box	Box Size	Box Weight	Order Code
Schützermed	Standart	1	25	11 x 20 x 25 cm.	450 gr.	PEB 304

CE 0476

Wound Care Support Products





FERSEMED Heel Protector	43
FERSEMED RG Food Elevator.....	44

FERSEMED

Heel Protector

It is used for heel protection decubitus ulcers (pressure sores) while the patient is reclining for a long term.



- It is used for heel protection decubitus ulcers (pressure sores) while the patient is reclining for a long term.
- Prevents the heel contact with sheets and prevents erosion of involuntary motion.



- Easy to use and simple.
- Wraps the heel comfortably and fixed by Velcro straps.
- Provides effective relief in patients.
- Can be washed at 30 °C and reusable.

Fersemed Ordering Information

Model	Size	Piece Pouch	Pouch/ Box	Box Size	Box Weight	Order Code
Fersemed	17 x20	1	25	51 x 35 x 50 cm	1750 gr	HPS 101

FERSEMED Rg

Foot Elevator

This foot elevation device is designed to reduce the risk of pressure ulcers (pressure sores) while the patient is in bed or reclining for a long term.



- It fits around the ankle to raise the heel off of any surface .
- It has a spiral-cut foam ring which easily fits over liner that provides foot elevation and comfort and can be fixed to the wrist with Velcro locks .

- Cylindrical body allows the patient's feet to the right to the left and back and forth.
- With its sponge structure provides softness and comfort.
- Cotton finished cover will not harm the skin.
- The product can be cleaned by hand or machine washed at 30 °C.

Fersemed RG Ordering Information

Model	Size (cm)	Piece Pouch	Pouch/ Box	Box Size	Box Weight	Order Code
Fersemed Rg	R: 24 x h: 10	1	1	25 x 11 x 25 cm	304 gr.	HPC 101
	R: 24 x h:15	1	1	25 x 16 x 25 cm	344 gr.	HPC 102



Fall Risk Products



Fall Management Socks	46
Fall Precaution Bracelets	47
Essential Fall Management Kit	47

Fall Management Socks

Designed for fall risk patients

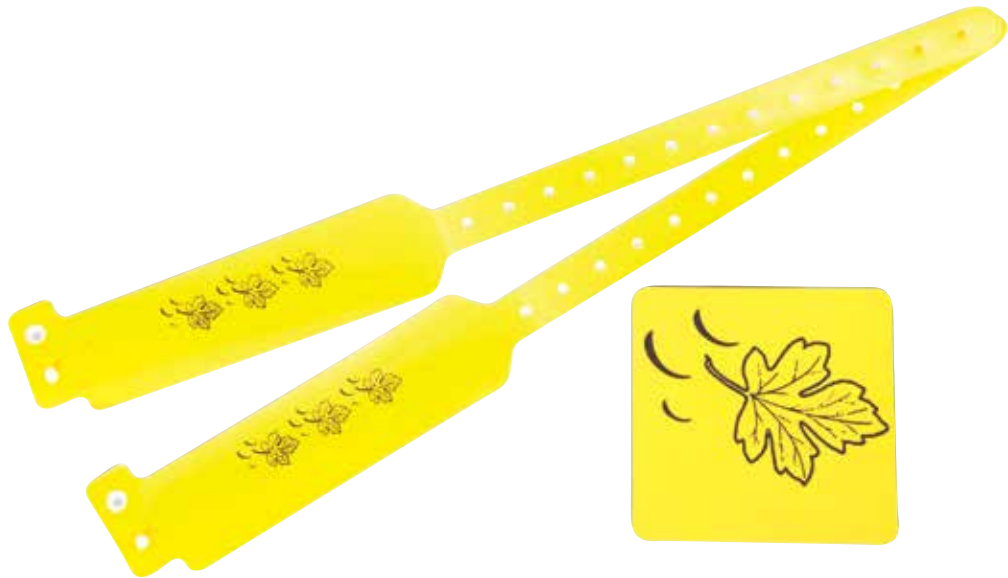


- Patients requiring non-skid footwear to help prevent falls.
- Soft terry cloth.
- Skid resistant rubber tread on both sides.
- Available in 5 colors.
- 3 size: large, medium and small.
Small: up to 38
Medium: up to 45
Large: up to 47
- Latex free.
- 30 °C washable.

Color	Dimensions	Order Code
Red	Small Socks Fits Up too Youth 38	MS35SR
Red	Medium Socks Fits Up too Adult 45	MS45MR
Red	Large Socks Fits Up too Adult 47	MS47LR
Orange	Small Socks Fits Up too Youth 38	MS35SO
Orange	Medium Socks Fits Up too Adult 45	MS45MO
Orange	Large Socks Fits Up too Adult 47	MS47LO
Purple	Small Socks Fits Up too Youth 38	MS35SP
Purple	Medium Socks Fits Up too Adult 45	MS45MP
Purple	Large Socks Fits Up too Adult 47	MS47LP
Green	Small Socks Fits Up too Youth 38	MS35SG
Green	Medium Socks Fits Up too Adult 45	MS45MG
Green	Large Socks Fits Up too Adult 47	MS47LG
Yellow	Small Socks Fits Up too Youth 38	MS35SY
Yellow	Medium Socks Fits Up too Adult 45	MS45MY
Yellow	Large Socks Fits Up too Adult 47	MS47LY

Fall Precaution Bracelets

Use for identify patients at risk of easily fall.



- Produced from the Polymer material compatible to the medical devices material terms and standards*.
 - Antiallergic, antibacterial and antifungus hygienic structure that doesn't irritate the skin, not composed bacteria and fungal on it.
 - Easy and rapid application.
 - Safety lock with its popper system.
 - It has various sizes, length and width for different kind of purposes.
- *Not used cancerogenic and PVC/DOP featured materials harmful to human health.

Model	Boy	Color	Size	PieceBox	Box Size	Box Weight	Order Code
DRHTB 1	Child	Yellow	2.5 x 24.2 cm	250	11 x 27 x 7 cm.	410 gr.	PSP - F01
DRHTB 2	Adult	Yellow	3.2 x 30 cm	250	11 x 33 x 7 cm.	500 gr.	PSP - F02

Essential Fall Management Kit**

- Easily identify patients at risk for falls.
- All components for high fall risk patient identification in one prepackaged kit.
- Takes the guesswork out of what products to use.

**Please contact with our sales department for order informations of products.





Patient Friend



Confident



Comfortable



Healthy



Easy to use



Economic



Beside with you



Medikokim Tıbbi Kimyevi Malzeme San. Tic. AŞ
İkitelli O.S.B. Demirciler Sanayi Sitesi B/7 Blok No:157
Başakşehir PK 34306 İstanbul / TÜRKİYE
Phone +90 212 549 57 78 • Fax: +90 212 549 57 79

E-mail: info@medikokim.com

medikokim.com

Rev.: 03